



# How are your berries?

Jerry Hupp

U.S. Geological Survey

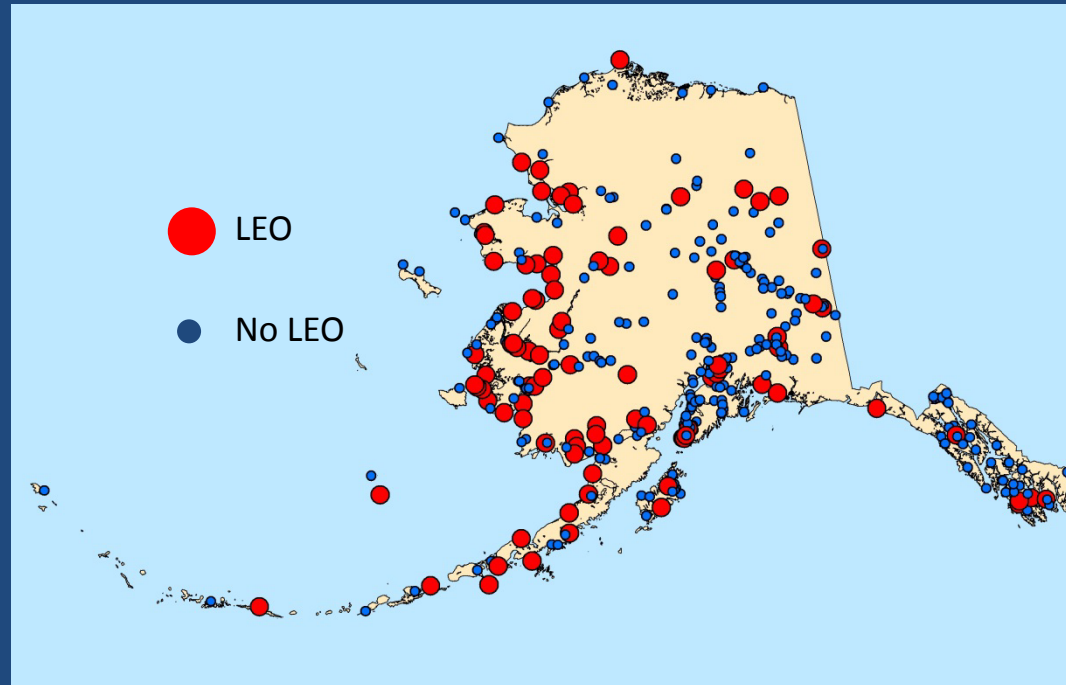
Kira Wilkinson

Alaska Native Science and Engineering Program, UAA

Mike Brubaker and Jeni Williamson

Alaska Native Tribal Health Consortium

We sent a survey to the LEO community  
and distributed surveys at ATCEM and AFE

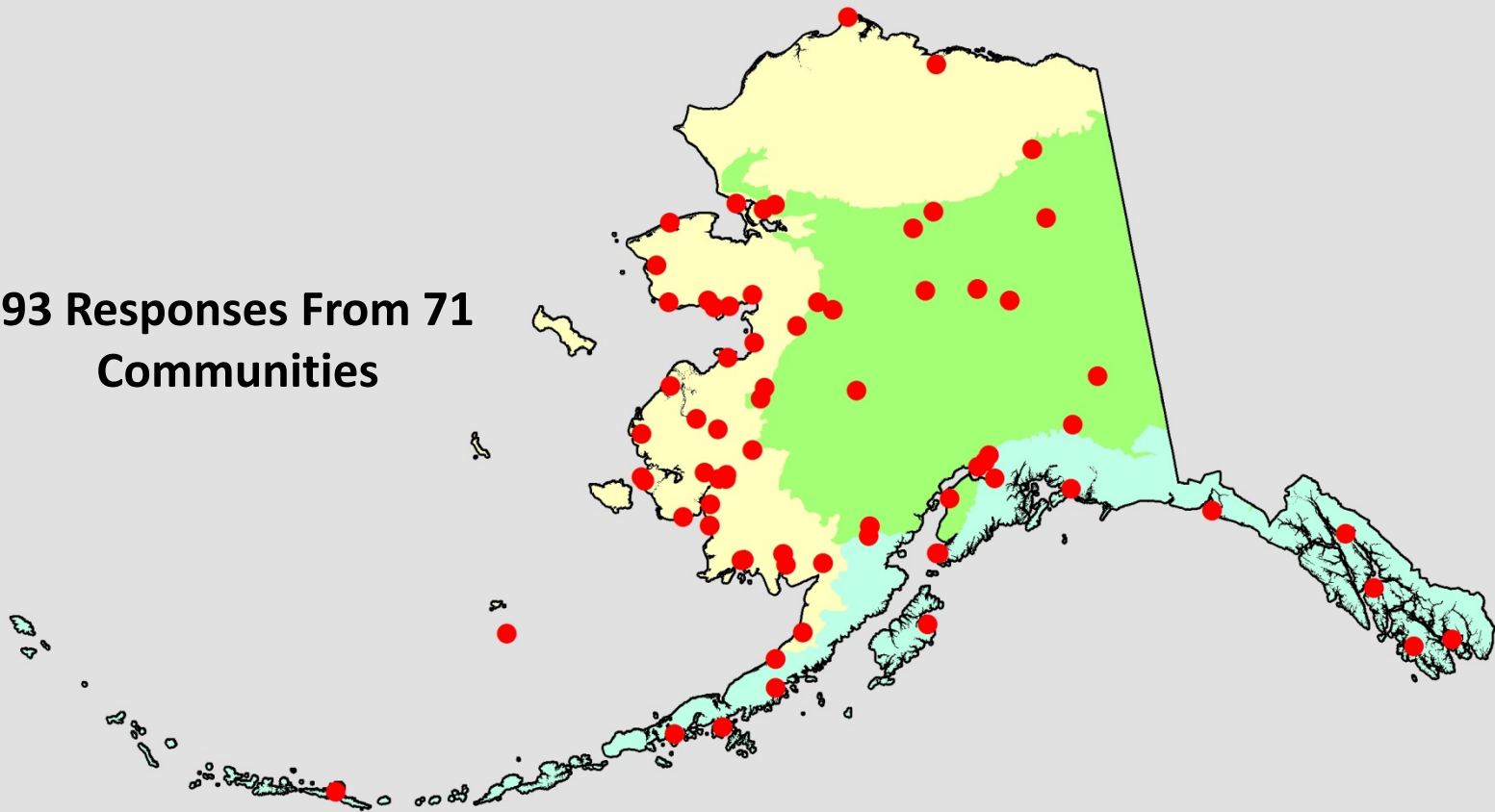


Which of 16 species of berries did people pick?

- Berry that people picked most often
- Berry people sometimes picked
- Berry that people rarely picked

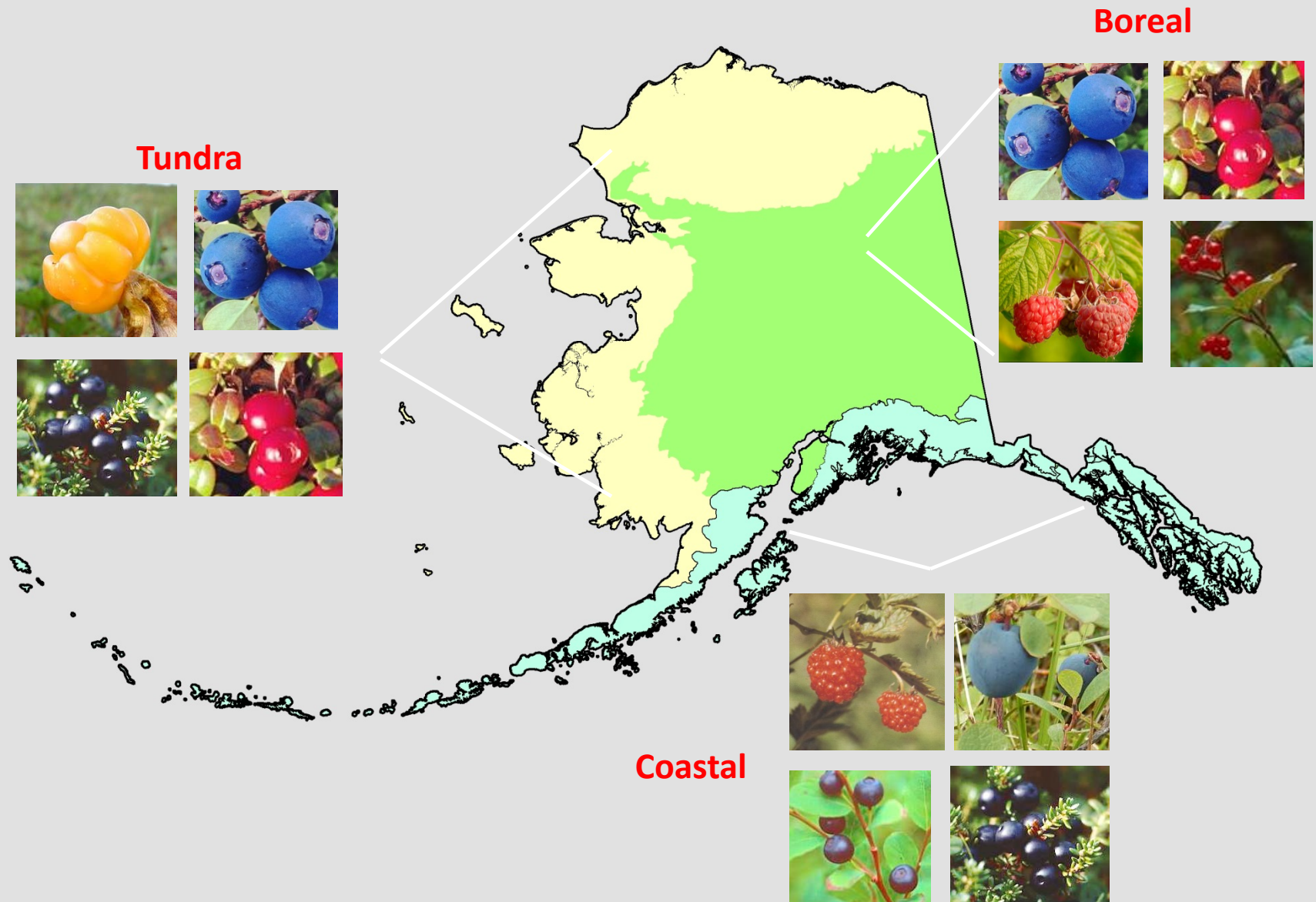
## Which Communities Have Completed Surveys?

**93 Responses From 71  
Communities**



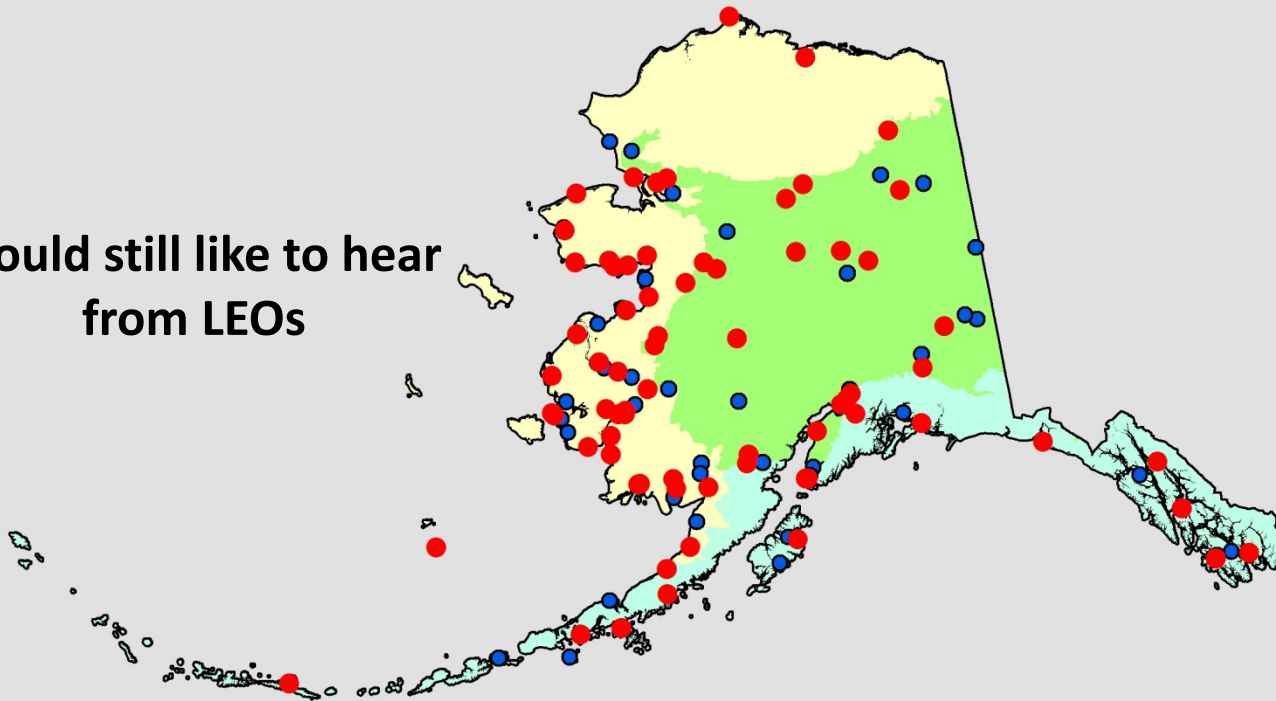


# Important Berries are Different in Each Region of Alaska



## Which Communities Have Completed Surveys?

Would still like to hear  
from LEOs



- Communities that have completed survey
- LEO communities that have not completed survey





**LAST CHANCE TO TAKE PART IN THE SURVEY**

**CONTACT**

**Mike: [mybrubaker@anthc.org](mailto:mybrubaker@anthc.org)**

**Or**

**Jerry: [jhupp@usgs.gov](mailto:jhupp@usgs.gov)**