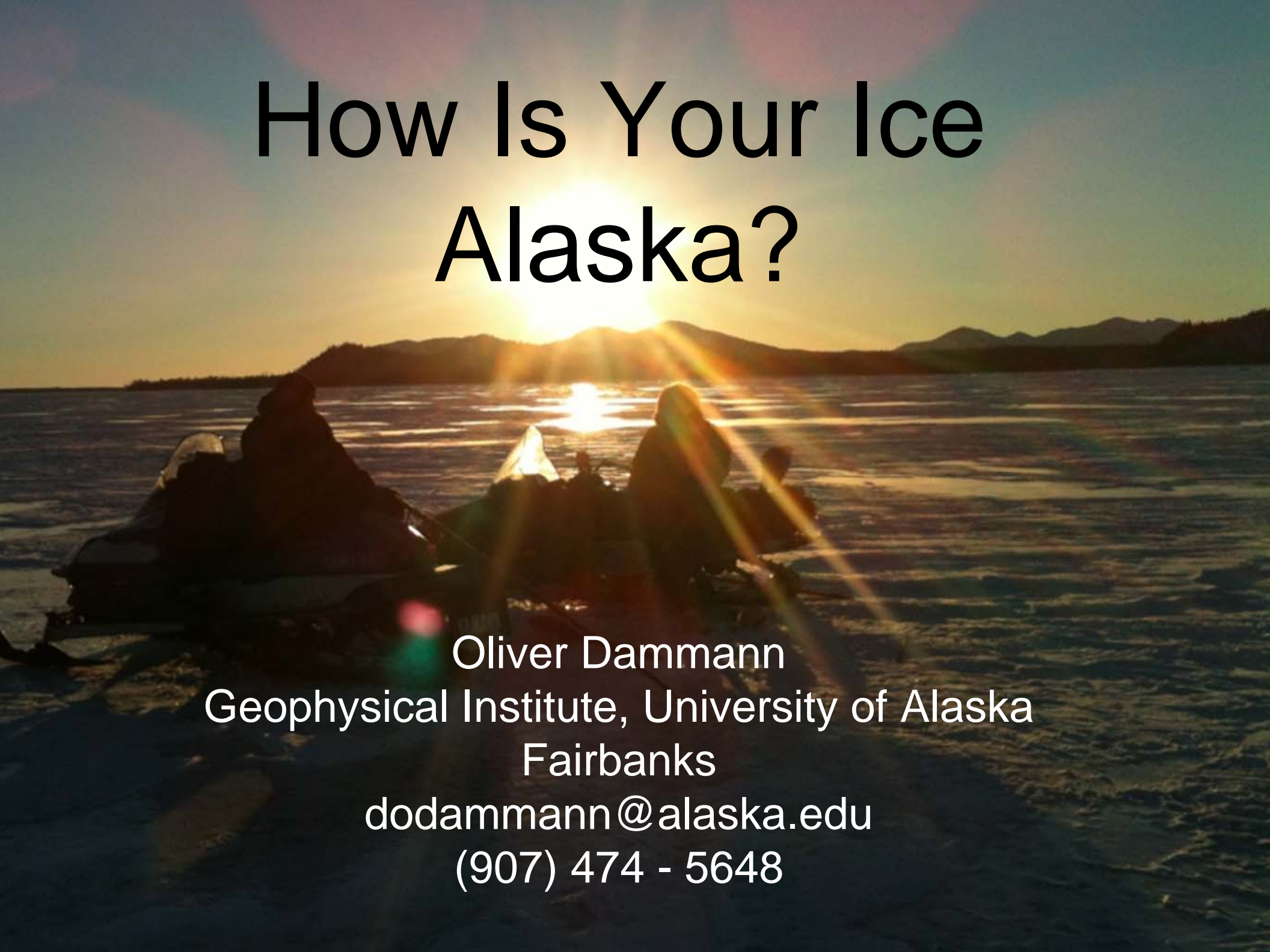
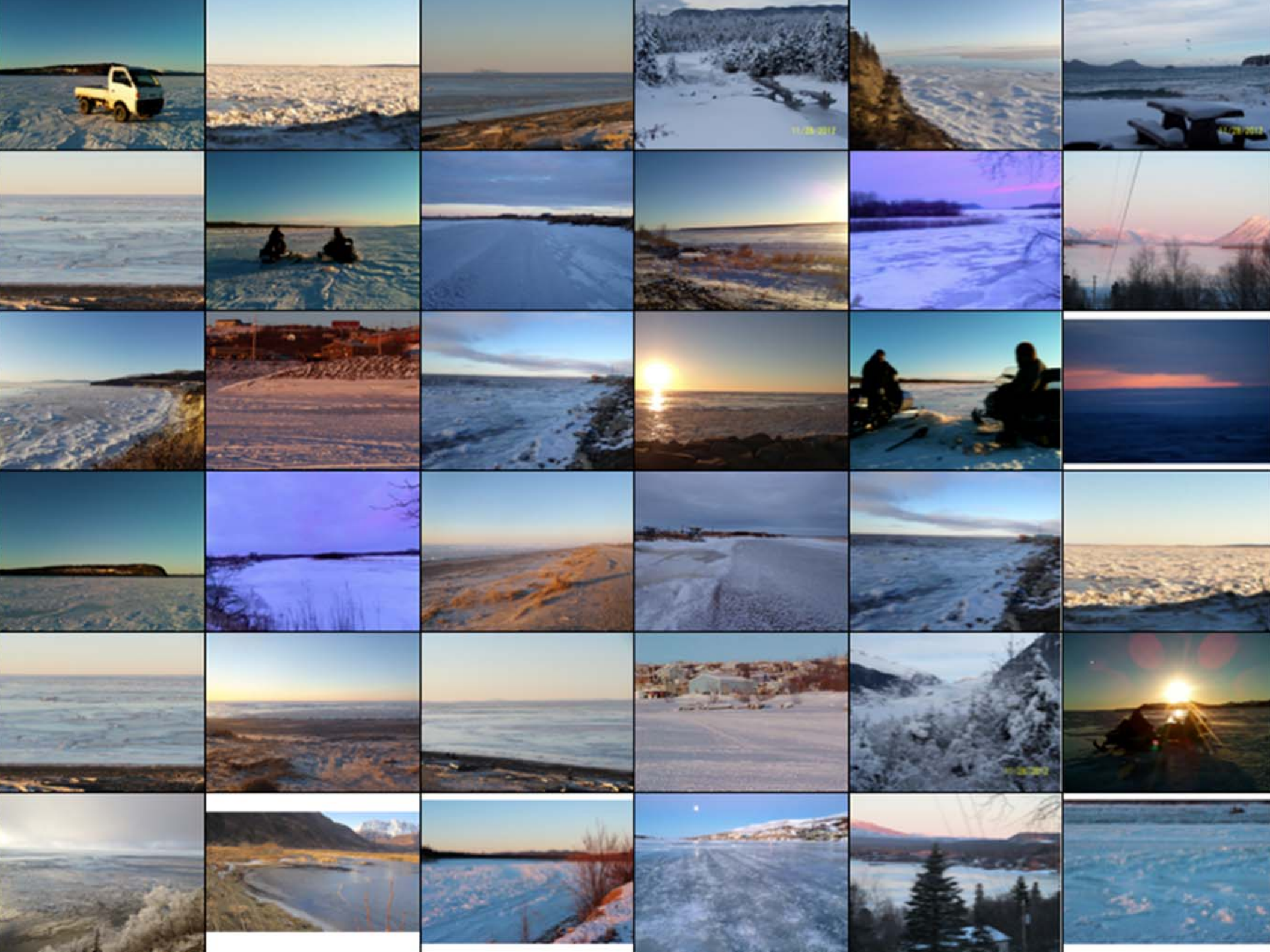


How Is Your Ice Alaska?

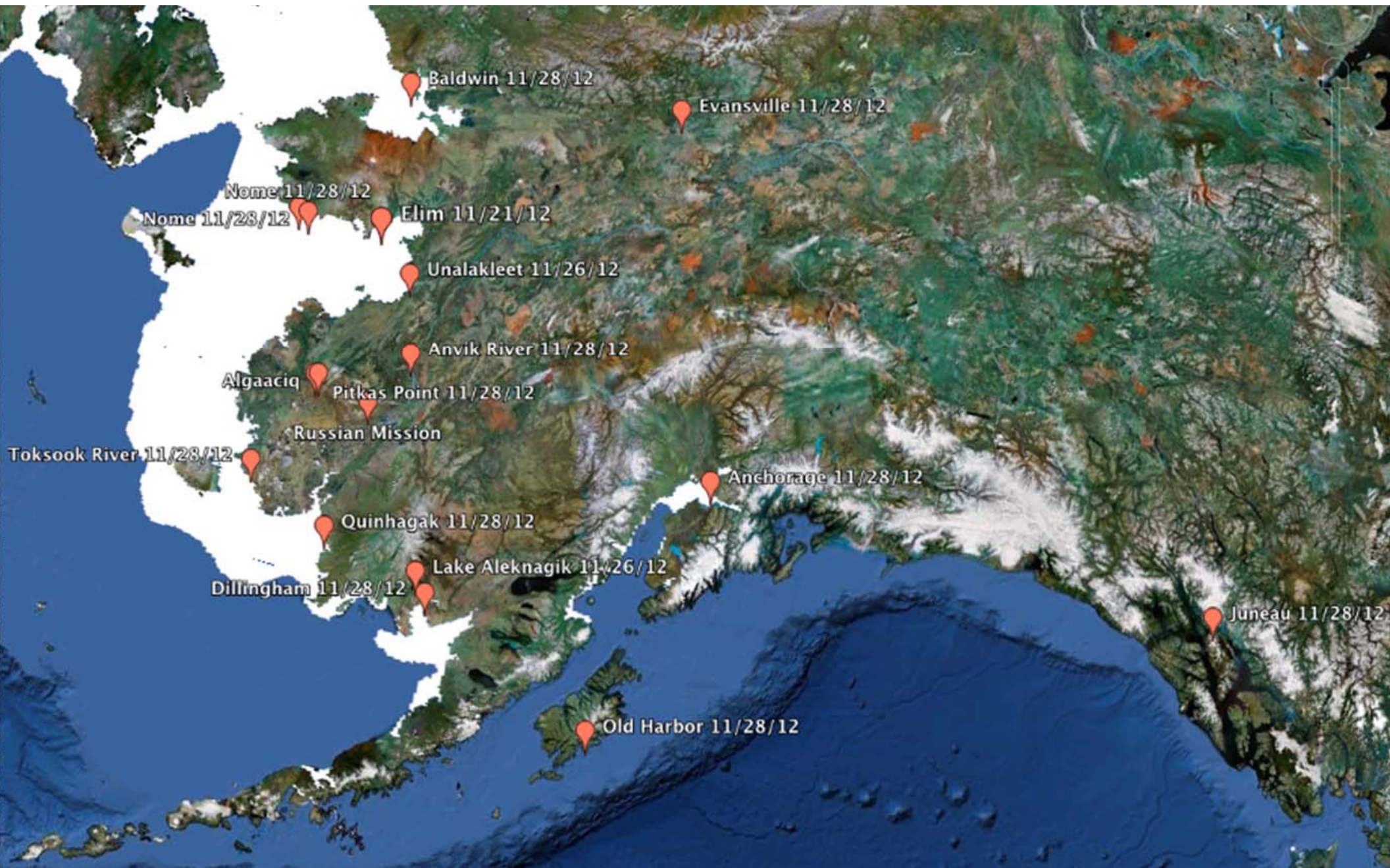


Oliver Dammann
Geophysical Institute, University of Alaska
Fairbanks
dodammann@alaska.edu
(907) 474 - 5648



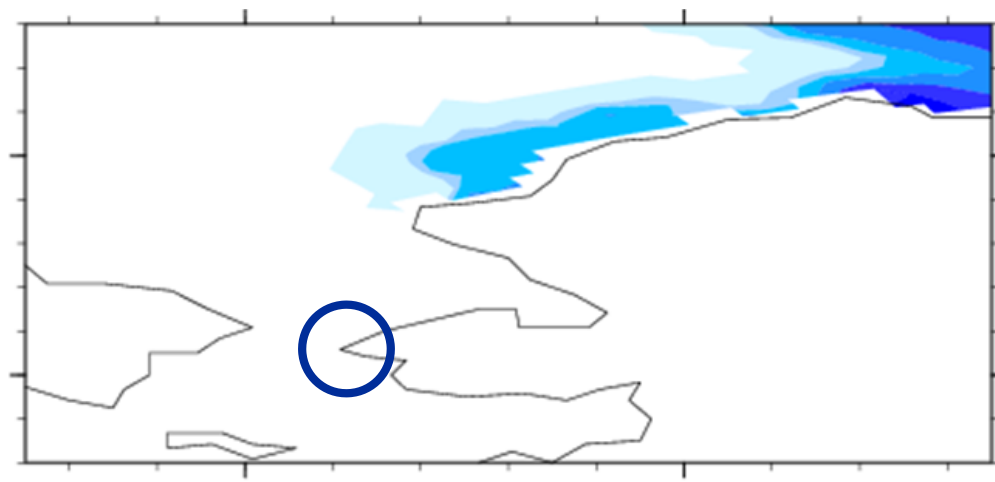
State of Alaska Sea Ice, November 28, 2012

Sea ice extent from the National Snow and Ice Data Center

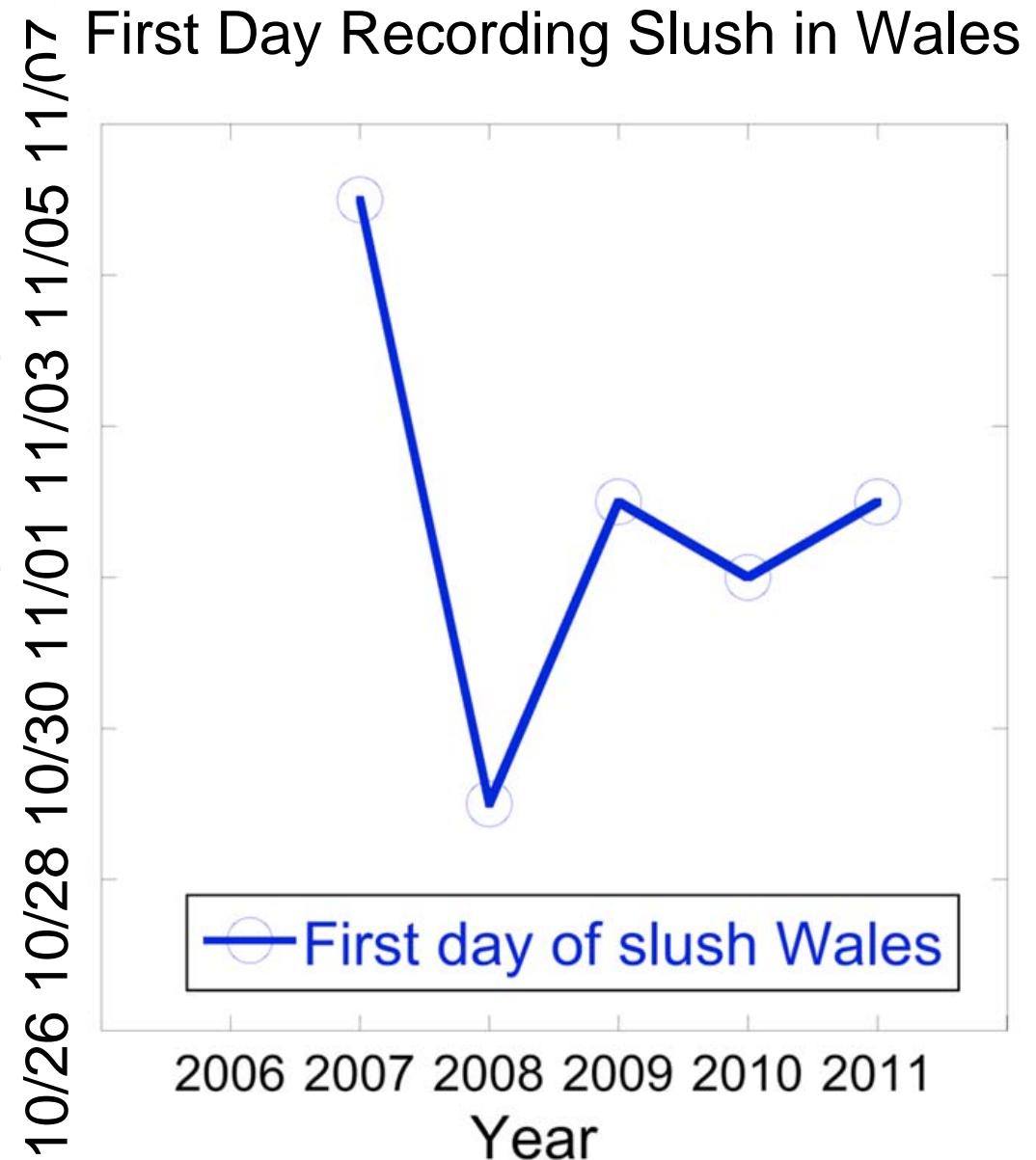


Local observations are necessary to learn about changes in Alaska's ice and calibrate/validate remote sensing data

Satellite Derived Sea Ice Concentration for Wales
Nov. 07, 2007



Local Observer, Winton Weyapuk Jr., reports:
“There are narrow strips of light slush in the ocean.”



Anvik River

Photo by: Alberta Walker



Evansville

Photo by: Debbie Sue Nictune



Quinhagak

Photo by: Joe Pleasant



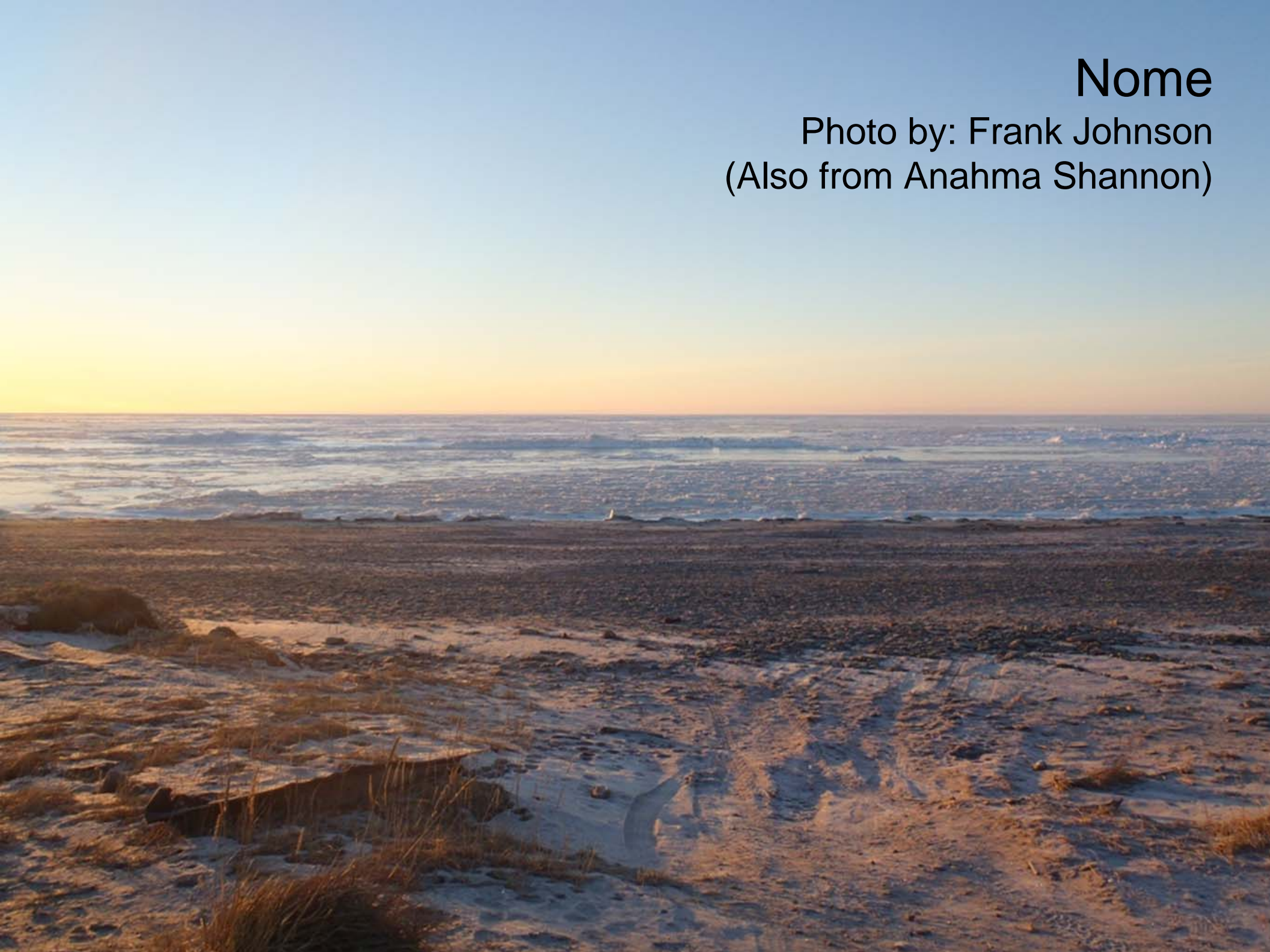
Russian Mission

Photo by: Sharon M. Kozevnikoff



Nome

Photo by: Frank Johnson
(Also from Anahma Shannon)



Unalakleet

Photo by: Victoria Kotongan



Elim

Photo by: Judith F. Daniels



Kwigillingok

Observer: Noah Andrew

Dillingham

Photo by: Jennifer L. Skarada

10/17 - Thin ice forming on mud flats

10/23 - Ice that was pushed by the tide started to form on shore

11/02 - Tide started to push ice along shore and form small bergs

Ice with mud and sand only form when ice got thin





2006

Algaaciq

Photo by: Charles and Ursula Prince

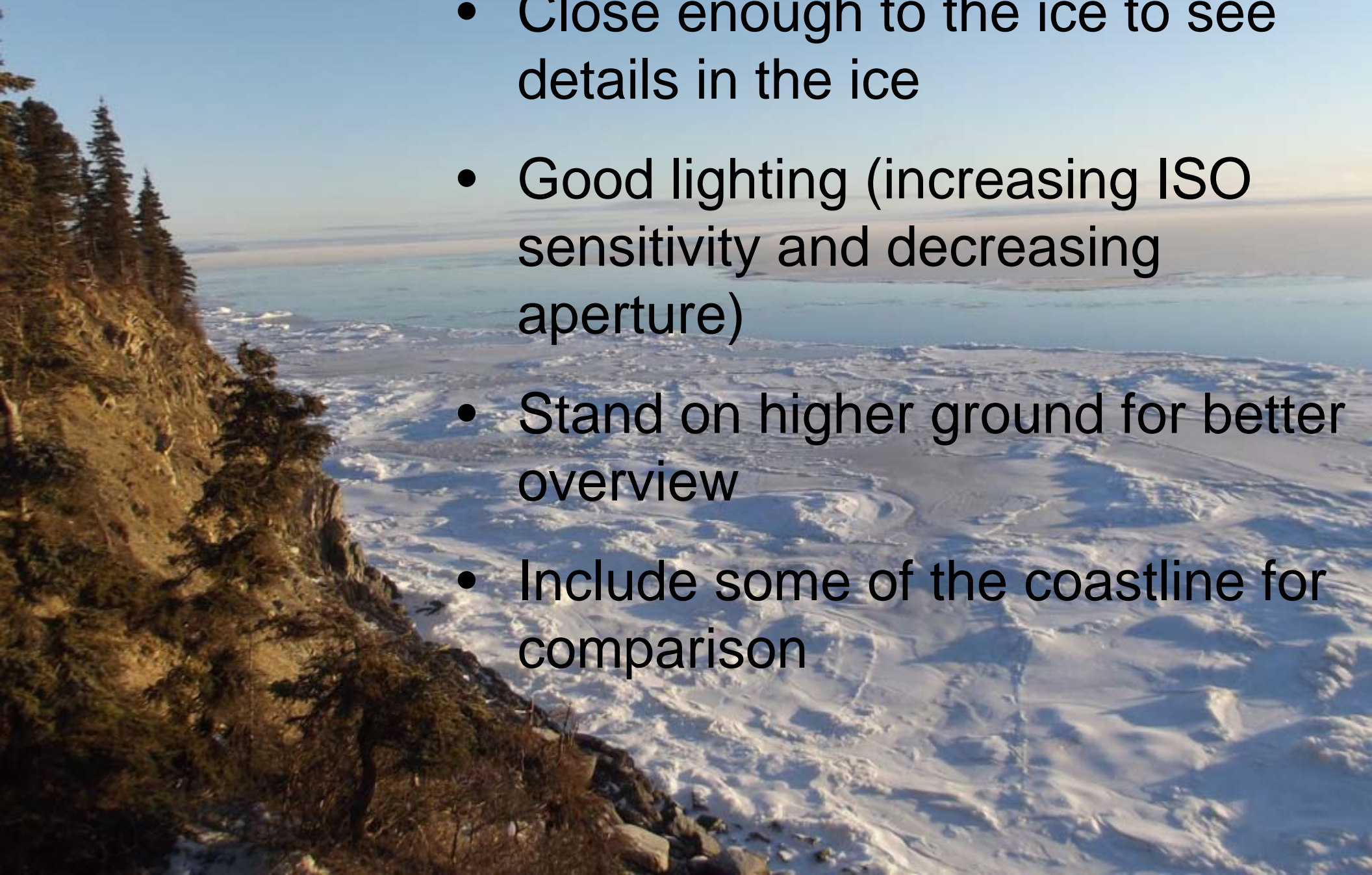
Lake Aleknagik

Photo by: Daniel Chythlook



How To Best Capture Sea Ice In a Picture

- Close enough to the ice to see details in the ice
- Good lighting (increasing ISO sensitivity and decreasing aperture)
- Stand on higher ground for better overview
- Include some of the coastline for comparison



Thank You All For Participating!



Anchorage
Photo by: Mike Brubaker